



Dear BSD Community,

Education is changing... not just here in Delaware, but across the country. Parents have more options than ever before for their children's education — private schools, parochial schools, charter schools, and school choice. Gone are the times when it was assumed that children would attend their neighborhood school. Today, parents have a choice.

Here in the Brandywine School District, we take that choice very seriously. The Brandywine School District is proactive in meeting the diverse needs of our student population. We believe strongly in our mission to embrace, inspire, and challenge every student every day. To meet the needs of all the families we serve, we offer a wide variety of programs for all students — from those who consistently perform at the highest levels to those who require additional supports to meet and exceed standards. Through a network of support from counselors, school psychologists, nurses, and social workers, we are able to collaborate with students, families, and community agencies to strengthen school success for all. Our staff — all of them, in all roles — are second to none. BSD educators are highly qualified and credentialed... highly productive and professional... and highly effective and inspirational.

We offer a rich curriculum for all students, much of which you will read about in this publication. Through AP classes, the International Baccalaureate Programme, STEM, Singapore Math, AVID, extracurricular activities, and social and psychological supports, we are committed to educating the whole student — mentally, emotionally, and socially.

At the same time, we strive to always be responsible stewards of taxpayers' money. We take very seriously our responsibility to provide a quality education for all students while containing and even reducing costs. In recent years, this has included closing two schools and reconfiguring grade levels, adjusting bus routes, and using state contracts and online procurement systems. All of these measures were carefully considered and taken to increase efficiency while protecting our classrooms.

We must be doing something right. Since 2007, our enrollment has steadily climbed, from 10,210 to more than 10,850 in the current school year. While we acknowledge that simple economics has played a part, we also know that parents would not trust something as important as their child's education to a district that they did not believe in. To that point, BSD consistently has a very high number of students electing to choice into the District and a better choice ratio (in versus out) than any other district in the state; this year, 521 students choiced into BSD from other Delaware districts!

I invite you to call our schools and arrange a tour to see our students and staff in action. Come see for yourself how the Brandywine School District **Measures Up!**

Sincerely,
Mark A. Holodick, Ed.D.
Superintendent



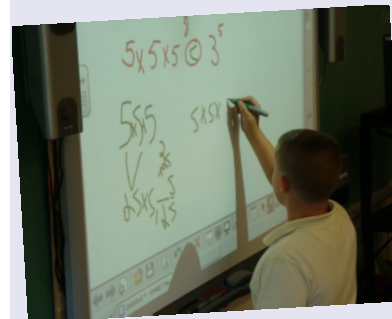
BRANDYWINE SCHOOL DISTRICT MEASURES UP! TO THE NEEDS OF OUR STUDENTS AND THE EXPECTATIONS OF OUR COMMUNITY

• Building a culture of college- and career-readiness

The Brandywine School District's goal is to exceed state and national standards. Through the consistent use of best instructional practices across all buildings and grade levels, students are challenged academically and supported emotionally. BSD instruction does not stop with learning the concepts of our core curricular areas, but also develops many necessary skills at all grade levels such as problem solving, critical thinking, teamwork and collaboration, creativity and more. Upon graduation, our students are not just prepared to enter college or the workplace, but are ready and able to succeed.

• STEM - Science, Technology, Engineering, and Math

The STEM program in the Brandywine School District seeks to produce more students who are both passionate and prepared to become tomorrow's scientists and engineers. STEM Education is an interdisciplinary approach to learning where rigorous academic concepts are coupled with real world lessons and where students apply science, technology, engineering, and mathematics in contexts that make connections between school, community, work, and global enterprise.



• Singapore Math

In 2010, after four years of research and review, Brandywine became the first district in the state to implement the rigorous Singapore Math curriculum. This proven international curriculum and pedagogical strategy promotes a deep understanding of essential math skills through a consistent and strong emphasis on problem solving and model drawing and is well aligned to the Common Core State Standards. Singapore Math provides a focused, coherent curriculum for all of our students from kindergarten through seventh grade and builds a strong foundation for the acquisition of mathematics knowledge and skills in later years.

• International Baccalaureate Programme

The IB Programme, the most challenging course of study available to students in the world, offers a comprehensive liberal arts education that focuses on developing international understanding, intellectual rigor, and high academic achievement. Students study individual curriculum areas and trans-disciplinary areas across a broad range of subjects. Special emphasis is placed on learning a second language, and students are provided opportunities for individual and collaborative planning and research. The Brandywine School District is the only district in the state to offer IB at all three levels — elementary (Harlan), middle (Talley and P.S. duPont), and high school (Mt. Pleasant).



• The state's only full-time Gifted program for grades K-8

The Brandywine School District is committed to providing quality programming and opportunities for students identified as gifted and/or talented, and for students whose rate and level of learning is above the average. This school year, the Gifted Program is located by grade level at the following schools: Mt. Pleasant Elementary (for students in grades K-3), Claymont Elementary (for students in grades 4-5), and P.S. duPont Middle (for students in grades 6-8).

• AVID - Advancement Via Individual Determination

AVID targets students in the academic middle – B, C, and even D students – who have the desire to go to college and the willingness to work hard. These are students who are capable of completing rigorous curriculum but are falling short of their potential. Typically, they will be the first in their families to attend college, and many are from low-income or minority families. In addition to enrolling in their school's toughest classes, AVID students also participate in the AVID elective – one period per day

where they learn organizational and study skills, critical thinking, and problem solving, and can receive on-site tutorial support. AVID is offered in all secondary schools in the district.

• Preschool programming

The Brandywine School District is committed to providing a quality education for students of all ages. To help prepare students for Kindergarten, BSD offers half-day preschool programming in two locations: Bush Early Education Center and Brandywine Early Childhood Assistance Program (ECAP) at P.S. duPont Middle School. Both programs provide age-appropriate curriculum, certified early childhood teachers, services for children with special needs, hands-on, participatory activities, family involvement, and access to therapists, social workers, and instructional aides, as appropriate.



The Brandywine School District promotes students' mental, physical, emotional, and social development through extracurricular activities such as clubs, physical education and sports teams, fine arts, drama, music, and more.

Physical education and athletics:

- foster student development by building confidence and self-image.
- teach students to manage time, school, sports, and social events.
- help to develop confidence in students and teach them the values of teamwork.
- develop strong healthy habits.
- instill a sense of responsibility for the student's actions and a commitment of being counted on when needed.

Fine Arts programs:

- promote creativity and imagination, leading to greater problem solving skills and analytical thought processes.
- reinforce concepts such as symmetry, spatial relationships, languages, and technology.
- enhance fine motor skills.
- can dramatically enhance the abstract reasoning skills necessary for learning math and science.

Outstanding learning environments

The Brandywine School District prides itself on its clean, safe, state-of-the-art, energy efficient facilities. Recent renovations to Harlan Elementary, P.S. duPont Middle, Lancashire Elementary, Lombardy Elementary, and Springer Middle Schools are but a few of the visible projects the District has undertaken. In addition, with the opening of the new Hanby Elementary School and Bush Early Education Center during the 2011-2012 school year, BSD will be the first district in Delaware to construct a LEED-certified green school.